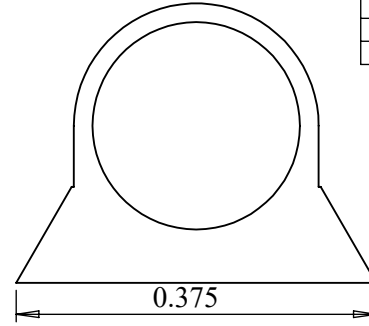
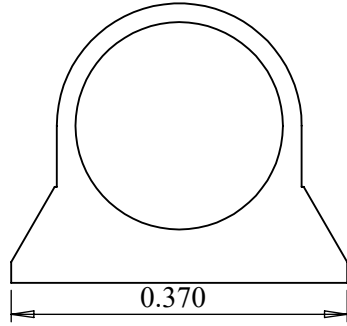


NOTES:  
1. XXX

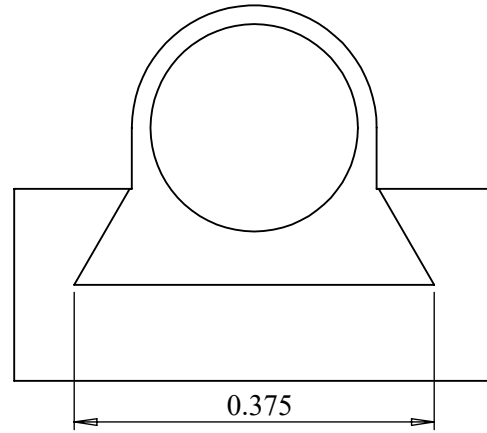
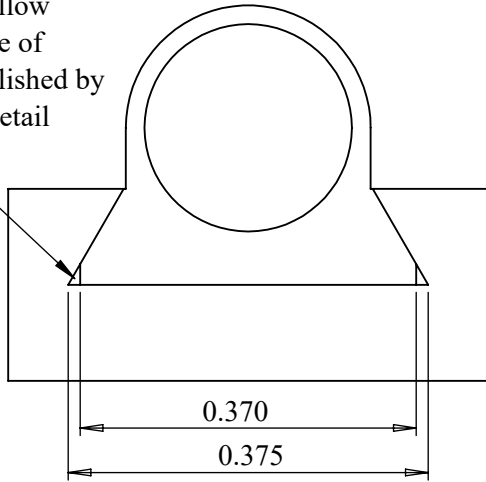
REVISIONS

ECO	REV	DESCRIPTION	DATE	ORIGINATOR
X	N/C			



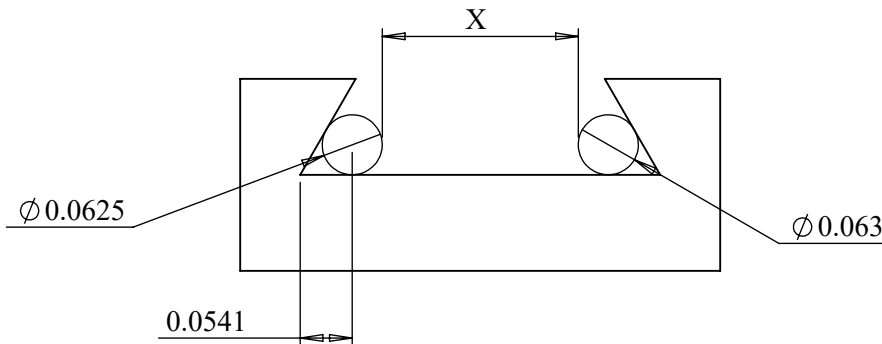
This sheet is to assist in understanding how dovetails are measured and how we cut dovetails. The 2 parts to the left are both .375 dovetails, however the left one has had the corners cut off so it measures .350. This DOES NOT mean it is a .350 dovetail.

Air gap to allow for clearance of radius established by internal dovetail cutter.



The next row is showing how these parts fit in a .375 dovetail. On the left part there is an air gap where the corners have been cut off, but it still fits in the .375 dovetail.

Since all internal dovetail cutters leave a radius, we intentionally program a .004" per side flat, removing the sharp corner. Therefore a .375 dovetail, which we will cut to .378 (.003" to allow for fitting) will measure .370 over the base flat.



To measure a dovetail on a gun we recommend using 2 pins, such as a 1/16 drill bit, inside the dovetail and measuring the distance between the 2 pins. We can then calculate what the dovetail measures.

Tolerance: EAN  
 XXXX = +/- .0005  
 XXX = +/- .005  
 XX = +/- .010  
 Ang = +/- .5 DEG



Montana Vintage Arms Co.  
 61 Andrea Dr., Belgrade, MT 59714  
 Tel (406)388-4027 Fax (406)388-6503

TITLE		Dovetail Sheet		
PART NUMBER		XXX		
CHECKED BY		DRAWN BY	RCD	4/1/2022
APPROVED BY		DATE OF LAST ENTRY	X	X/X/X
DO NOT SCALE TO DRAWING		FILE NAME	PNXXX-XXX	SHEET 1 of 1