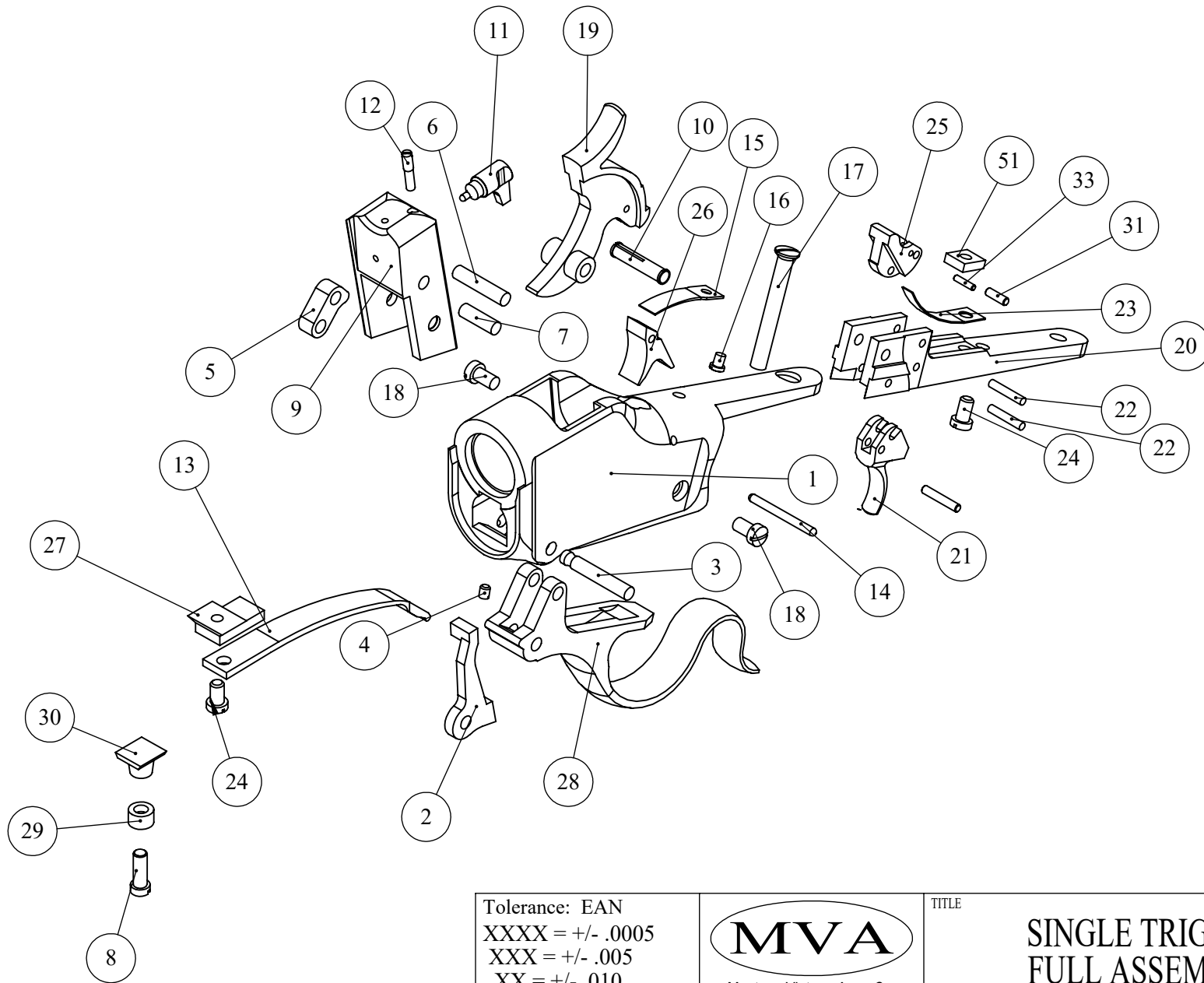


NOTES:  
1. XXX

REVISIONS

ECO	REV	DESCRIPTION	DATE	ORIGINATOR
X	N/C			



Tolerance: EAN  
 XXXX = +/- .0005  
 XXX = +/- .005  
 XX = +/- .010  
 Ang = +/- .5 DEG



Montana Vintage Arms Co.  
 61 Andrea Dr., Belgrade, MT 59714  
 Tel (406)388-4027 Fax (406)388-6503

TITLE  
**SINGLE TRIGGER  
 FULL ASSEMBLY**

PART NUMBER  
**XXX**

CHECKED BY  
 APPROVED BY  
 APPROVED BY

DRAWN BY RCD 2/2/2015  
 DATE OF LAST ENTRY X X/X

DO NOT SCALE TO DRAWING FILE NAME PNXXX-XXX SHEET 1 of 1

ITEM NO.	PART NUMBER	DESCRIPTION	QTY.	PRICE
1	ACTION BODY	1885-100	1	
2	EXTRACTOR	1885-160	1	\$30.00
3	FINGER LEVER PIN	1885-410	1	\$7.50
4	FINGER LEVER PIN SCREW	1885-405	1	\$4.50
5	LINK	1885-120	1	\$20.00
6	LINK PIN UPPER	1885-440	1	\$6.00
7	LINK PIN LOWER	1885-450	1	\$6.00
8	FOREARM SCREW	1885-117	1	\$6.50
9	BREECH BLOCK	1885-180	1	\$105.00
10	Hammer Split Pin	1885-460	1	\$15.00
11	FIRING PIN	1885-140	1	\$25.00
12	FIRING PIN SCREW	1885-430	1	\$6.00
13	MAIN SPRING	1885-310	1	\$45.00
14	SEAR PIN	1885-480	1	\$4.50
15	SEAR SPRING	1885-320	1	\$20.00
16	SEAR SPRING SCREW	1885-445	1	\$4.50
17	REAR TANG SCREW	1885-500	1	\$10.00
18	SIDE TANG SCREW	1885-415	2	\$4.50 ea
19	HAMMER	1885-150	1	\$90.00
20	Single Trigger Tang	1885-195	1	\$145.00
21	Single Trigger	1885-680	1	\$40.00
22	TRIGGER PIN	1885-490	2	\$4.50ea
23	Single Trigger Knockoff Spring	1885-330	1	\$10.00
24	Trigger Spring Screw	1885-455	2	\$4.50ea
25	Knockoff	1885-650	1	\$30.00
26	Single Set Sear	1885-630	1	\$25.00
27	Main spring base	1885-130	1	\$24.00
28	Single Set Lever	1885-170	1	\$125.00
29	Escutcheaon	1885-115	1	\$3.50
30	Forend lug	1885-110	1	\$15.00
31	Knockoff Catch Pin	1885-475	1	\$4.50
33	Knockoff Spring Pin	1885-465	1	\$4.50
41	Front Trigger Pin	1885-495	1	\$4.50
51	Single Spring Nut	1885-350	1	\$2.50
NOT PIC	Single Trigger Tang PG	1885-205	1	\$210.00
NOT PIC	Breech Block Rim Fire	1885-185	1	\$105.00
NOT PIC	Rim Fire Firing Pin	1885-145	1	\$27.50



406-388-4027